



Contributing to safer and smarter pipe network flow control

High Performance
Butterfly Valve

KAMROO HOLDING GROUP CO., LTD.

ADD No.28, Yongxing Road, Jianshan
New District, Jiaxing City, Zhejiang, China

TEL +86 (0)573 87979999 Ext 8068
+86 (0)573 8797 5353

WEB www.kamroo.com

E-MAIL info@kamroo.com





EST.2012

BRIFE INTRODUCTION

Contributing to safer and smarter pipe network flow control

Founded in 2012, KAMROO Holding Group is an innovative integrator focusing on "smart" manufacturing of valves. The core products are suitable for tough working applications such as low temperature, high temperature, high pressure, strong corrosion, and solids mixed medium. KAMROO products are suitable for industries such as Oil&Gas, Refinery, Chemical, Natural Gas, Power Plant, Metallurgy, Electronics, and new energy. The equivalent standards cover many industrial pipelines fields.

KAMROO strives to create an automation, digital, and intelligent platform, integrates profound technical accumulation and professional wisdom of the team. We also provide superior product support and technical services for domestic and international clients, as well as provide customized solutions for end user.

KAMROO adheres to customer-oriented principle and guarantees system compatibility. We will continue to maintain the attitude and belief of concentration and ingenuity, adhering to safer, more reliable and smarter pipeline flow control technology and advanced design concepts to help you optimize the working application, improve the efficiency and save the costs.

With a flexible and open attitude, KAMROO listens to the voice of the market and embraces multiculturalism. KAMROO focuses on the construction of a global service system, and strives to become the preferred partner in the field of flow control. No matter where you are in the world, we look forward to keeping in close contact with you to understand your specific needs and provide precise services.





API 6FA Cert



API 607 Cert



API 6D cert



CE Cert

QUALIFICATION CERTIFICATE



EAC Cert



ISO 14001:2015



ISO 45001:2018



ISO 9001:2015

HIGH PERFORMANCE BUTTERFLY VALVE

Contributing to safer and smarter pipe network flow control

DESIGN STANDARDS	API 609, ASME B16.34, ASME B16.10, ISO 7005, etc.
SIZE RANGE	NPS2~NPS48, DN50~DN1200
NOMINAL PRESSURE	CLASS150~CLASS600
CONNECTION	Flange, BW, Wafer, Lug, etc.
MATERIALS	ASTM A216 WCB, ASTM A352 LCB, ASTM A350 LF2, ASTM A351 CF8, ASTM A351 CF8M, A995 4A, etc.
APPLICABLE TEMPERATURE	-46°C~120°C
APPLICABLE MEDIUM	Water, Oil, Gas, etc.
OPERATION	Lever, Gear, Pneumatic, Electric, Hydraulic, etc.

ISO 5211 TOP FLANGE

The top flange is used when the valve is in bare shaft, which is used for installing actuators. The size of the top flange is strictly in accordance with the international standard ISO 5211.

DYNAMIC PACKING LOADING SYSTEM

In the leakage of the valve, it is traditionally concentrated on the leakage of the valve seat, that is, the internal leakage, while ignoring the leakage of the packing, that is, the external leakage. In the packing seal and other structures to prevent external leakage, the design of the spring washer is adopted to keep the packing always in a compressed state, and constantly release the elastic force to the packing, continuously releasing elastic force to the packing, so that the packing maintains a long-term seal and extends the packing maintenance-free period.

BI-DIRECTION SEALING DESIGN

Bi-direction sealing is achieved, which can bear pressure in both positive and negative directions. This series could reach zero-leakage requirement when bearing pressure in both positive and negative directions.

VALVE SEAT TYPE

PTFE, RPTFE fire-safe seat, etc.

FIRE-SAFE STRUCTURE AND DESIGN

Fire-safe valves are fire tested according to API 607.

ANTI BLOW-OUT DESIGN

Prevent the internal valve stem from being pressurized, and the valve stem rushing out of the valve.

EASY MAINTENANCE OF VALVE SEAT

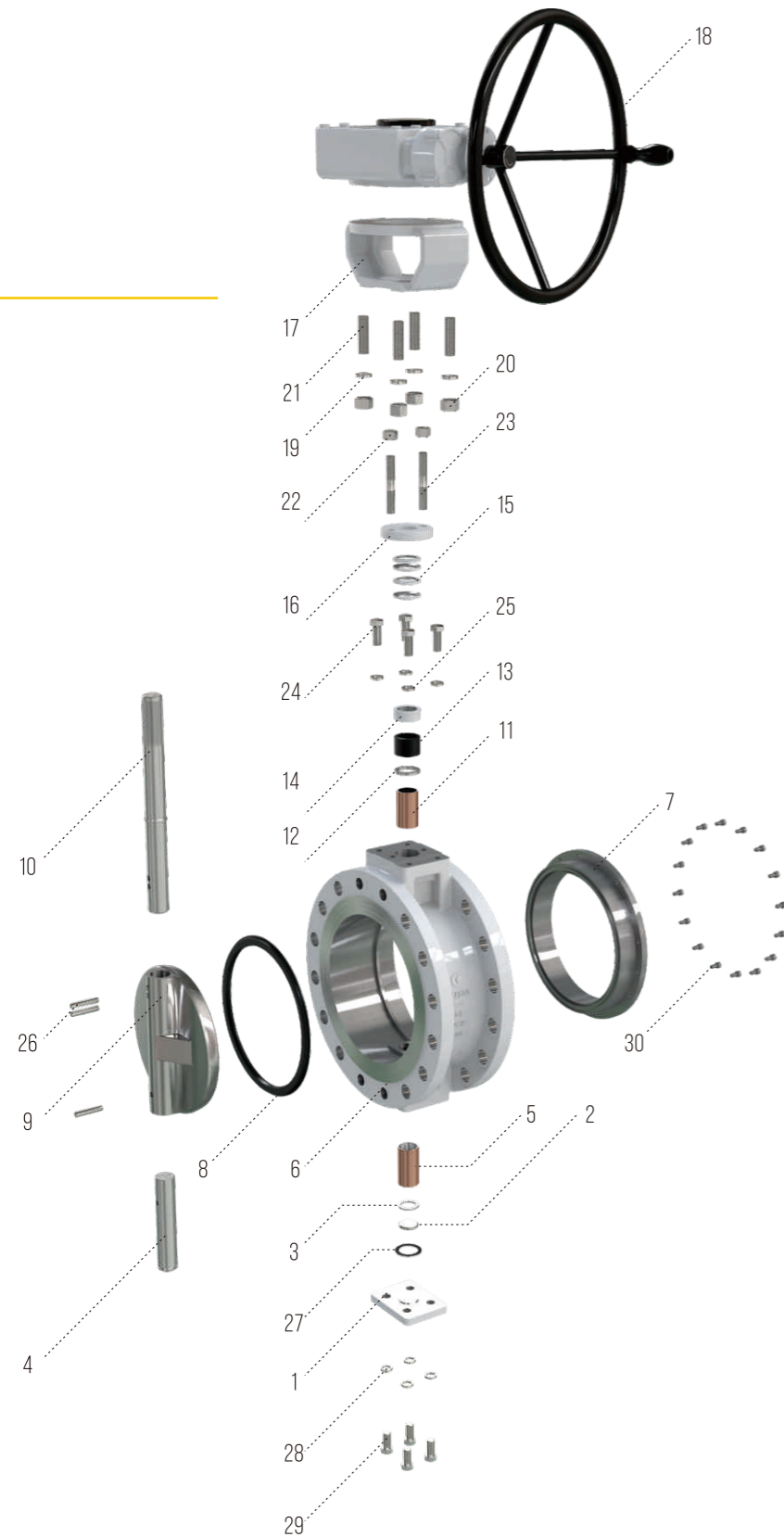
Simply remove the insert to replace the valve seat without disassembling the butterfly valve and shaft.

CONNECTION BETWEEN VALVE STEM AND DISC PLATE

The valve stem and disc plate are connected by pins, which effectively increases the strength of the valve stem and plate connection reliability.

SELF-LUBRICATING SHAFT SLEEVE

The ultra-low friction coefficient self-lubricating sleeve reduces the friction between the valve stem and the sleeve, making the butterfly valve easy to open and close.

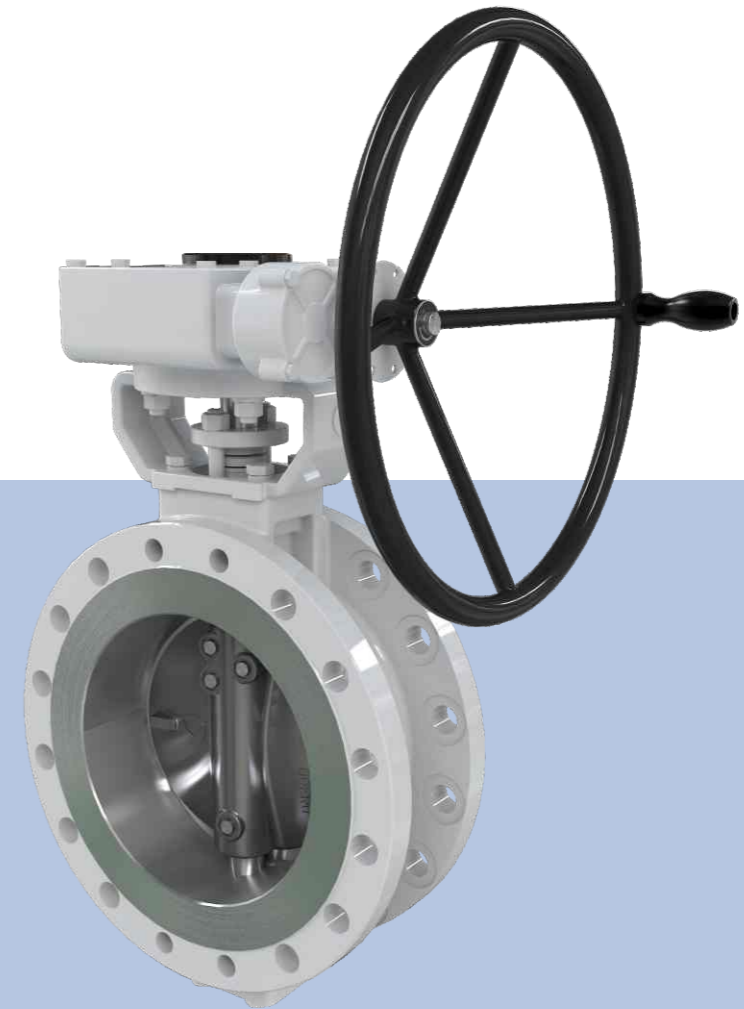


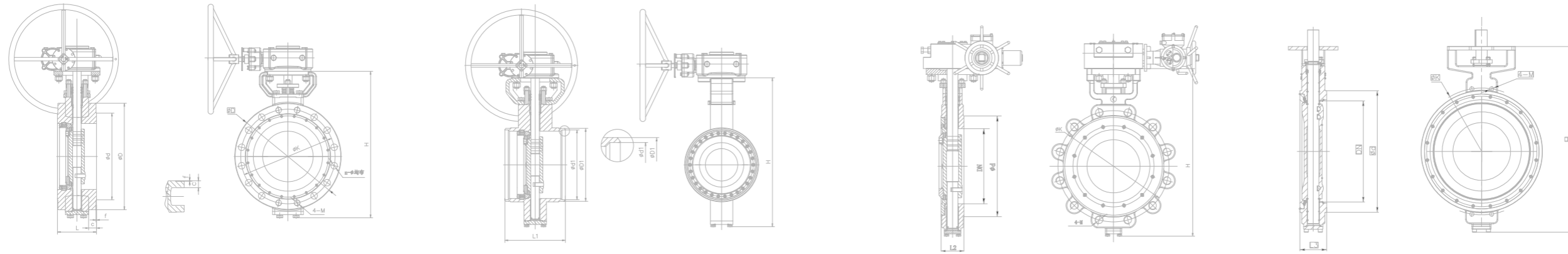
No.	Part Name	FORGED BODY		CASTED BODY	
		Carbon Steel	Stainless Steel	Carbon Steel	Stainless Steel
1	Bottom Cover	ANSI 1025	ASTM A182 F304	ASTM A182 F304	ASTM A182 F304
2	Adjusting Ring	ANSI 1025	ASTM A182 F304	ASTM A182 F304	ASTM A182 F304
3	Half Ring	SS304	SS304	SS304	SS304
4	Lower Stem	17-4PH	17-4PH	17-4PH	17-4PH
5	Sliding Bearing	ASTM A536 60-40-18	304+PTFE	304+PTFE	304+PTFE
6	Body	ASTM A216 WCB	ASTM A350 LCB	ASTM A351 CF8M	ASTM A995 4A
7	Seat Press Ring	ASTM A182 F6a	ASTM A182 F304	ASTM A182 F304	ASTM A182 F304
8	Valve Seat Insert	PTFE/RPTFE	PTFE/RPTFE	PTFE/RPTFE	PTFE/RPTFE
9	Disc	ASTM A351 CF8	ASTM A351 CF8M	ASTM A351 CF8M	ASTM A995 4A
10	Stem	17-4PH	17-4PH	17-4PH	17-4PH
11	Sliding Bearing	ASTM A536 60-40-18	304+PTFE	304+PTFE	304+PTFE
12	Packing Ring	ASTM A182 F6a	SS304	SS304	SS304
13	Packing	Carbon fiber+graphite	Carbon fiber+graphite	Carbon fiber+graphite	Carbon fiber+graphite
14	Packing Gland	ANSI 1025	SS304	SS304	SS304
15	Spring Washer	ASTM 9260	ASTM 9260	ASTM 9260	ASTM 9260
16	Gland	ANSI 1025	ASTM A182 F304	ASTM A182 F304	ASTM A182 F304
17	Yoke	ASTM A216 WCB	ASTM A351 CF8	ASTM A351 CF8	ASTM A351 CF8
18	Actuator Assembly	Assembly	Assembly	Assembly	Assembly
19	Springs	ASTM 1566	SS304	SS304	SS304
20	Nut	ASTM A194 2H	ASTM A194 8	ASTM A194 8	ASTM A194 8
21	Bolt	ASTM A193 B7	ASTM A193 B8	ASTM A193 B8	ASTM A193 B8
22	Hexagon Nut	ASTM A194 2H	ASTM A194 8	ASTM A194 8	ASTM A194 8
23	Bolt	ASTM A193 B7	ASTM A193 B8	ASTM A193 B8	ASTM A193 B8
24	Hex Screw	ASTM A193 B7	ASTM A193 B8	ASTM A193 B8	ASTM A193 B8
25	Springs	ASTM 1566	SS304	SS304	SS304
26	Pin	ASTM A182 F6a	17-4PH	17-4PH	17-4PH
27	Spiral-Wound Gaskets	SS316+Flexible graphite	SS316+Flexible graphite	SS316+Flexible graphite	SS316+Flexible graphite
28	Springs	ASTM 1566	SS304	SS304	SS304
29	Hex Screw	ASTM A193 B7	ASTM A193 B8	ASTM A193 B8	ASTM A193 B8
30	Hex Screw	ASTM A193 B8	ASTM A193 B8	ASTM A193 B8	ASTM A193 B8

Optional Body Material:
WCC, A352 LCB/LCC, A351 CF8/CF3/CF8M/CF3M, A890 4A/5A/6A, B148 C95800, Alloy Steel ect..

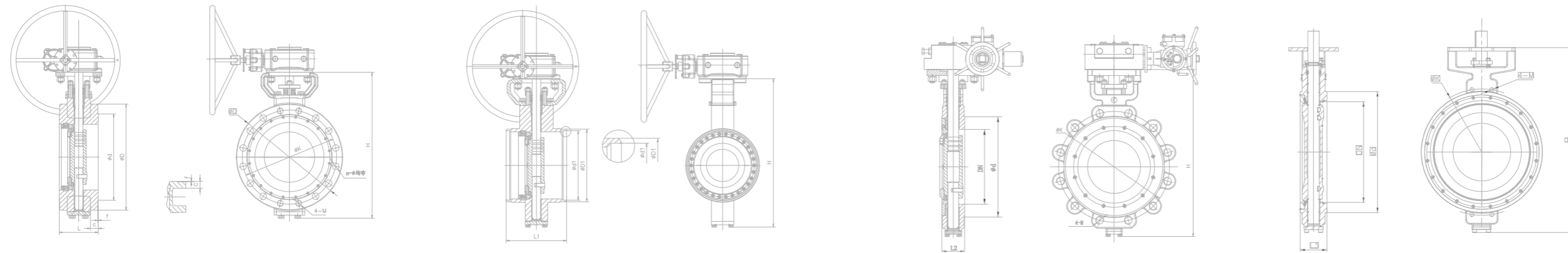
HIGH PERFORMANCE BUTTERFLY VALVE

Contributing to safer and smarter pipe network flow control





CLASS 150																	WEIGHT Kg			
		L	L1	L2	L3												L RF	L1 BW	L2 LUG	L3 WAFER
NPS	DN	Flange	BW	LUG	WAFER	D	K	d	c	f	n-φ	4-M	N	D1	d1	H	(kg)	(kg)	(kg)	(kg)
3"	80	114	/	48	48	190	152.4	127	24.3	2	4-φ19	/	4	88.9	78	339	24	/	6	6
4"	100	127	/	54	54	230	190.5	157.2	24.3	2	4-φ19	5/8-11UNC-2B	8	114.3	102	373	34	/	10	10
5"	125	140	/	56	56	255	215.9	185.7	24.3	2	4-φ22	3/4-10UNC-2B	8	141.3	128	414	45	/	13	13
6"	150	140	210	57	57	280	241.3	215.9	25.9	2	4-φ22	3/4-10UNC-2B	8	168.3	154	438	58	40	21	20
8"	200	152	230	64	64	345	298.5	269.9	29	2	4-φ22	7/8-9UNC-2B	8	219.1	203	507	90	54	29	28
10"	250	165	250	71	71	405	362	323.8	30.6	2	8-φ26	7/8-9UNC-2B	12	273	254.5	572	104	68	34.5	33
12"	300	178	270	81	81	485	431.8	381	32.2	2	8-φ26	1-8UNC-2B	12	323.8	305	657	152	112	80	78
14"	350	190	290	92	92	535	476.3	412.8	35.4	2	8-φ29	1-8UNC-2B	12	355.6	336.5	749	195	167	120	116
16"	400	216	310	102	102	595	539.8	469.9	37	2	12-φ29	1-1/8-8UN-2B	16	406.4	387.5	801	235	217	142	138
18"	450	222	330	114	114	635	577.9	533.4	40.1	2	12-φ32	1-1/8-8UN-2B	16	457.2	438	879	305	272	212	206
20"	500	229	350	127	127	700	635	584.2	43.3	2	16-φ32	1-1/4-8UN-2B	20	508	489	989.5	394	332	270	262
24"	600	267	390	154	154	815	749.3	692.2	48.1	2	16-φ35	1-1/4-8UN-2B	20	609.6	581	1107.5	623	500	395	383
28"	700	292	430	229	229	925	863.6	800	71.9	2	24-φ35	1-1/4-8UN-2B	28	711.2	686	1200.5	753	723	510	495
32"	800	318	470	241	241	1060	977.9	914	81.4	2	24-φ42	1-1/2-8UN-2B	28	812.8	787.5	1448	1102	900	762	739
36"	900	330	510	241	241	1170	1085.8	1022	90.9	2	28-φ42	1-1/2-8UN-2B	32	914.4	889	1570.2	1352	1280	1230	1193
40"	1000	410	550	300	300	1290	1200.2	1124	90.9	2	32-φ42	1-1/2-8UN-2B	36	1016	997	1721.2	1850	1733	1840	1785
48"	1200	470	630	360	360	1510	1422.4	1359	108.4	2	40-φ42	1-1/2-8UN-2B	44	1219.2	1200	1972	2099	2448	2806	2722
56"	1400	530	710	390	390	1745	1651	1575	124.3	2	44-φ48	1-3/4UN-2B	48	1422	1403	2040	2896	3255	/	/



CLASS 300															WEIGHT Kg			
NPS	DN	L Flange	L1 BW	L2 LUG	L3 WAFER	D	K	d	c	f	n-φ	4-M	N	H	L RF (kg)	L1 BW (kg)	L2 LUG (kg)	L3 WAFER (kg)
5"	125	200	200	56	56	280	235	185.7	35.4	2	4-φ22	3/4-10UNC-2B	8	469	54	/	14	14
6"	150	210	210	59	59	320	269.9	215.9	37	2	8-φ22	3/4-10UNC-2B	12	469	70	/	22	21
8"	200	230	230	73	73	380	330.2	269.9	41.7	2	8-φ26	7/8-9UNC-2B	12	520	108	/	30	29
10"	250	250	250	83	83	445	387.4	323.8	48.1	2	12-φ29	1-8UNC-2B	16	600	125	/	36	35
12"	300	270	270	92	92	520	450.8	381	51.3	2	12-φ32	1-1/8-8UNC-2B	16	702	185	/	84	82
14"	350	290	290	117	117	585	514.4	412.8	54.4	2	16-φ32	1-1/8-8UNC-2B	20	760	234	/	126	122
16"	400	310	310	133	133	650	571.5	469.9	57.6	2	16-φ35	1-1/4-8UN-2B	20	850	282	/	149	145
18"	450	330	330	149	149	710	628.6	533.4	60.8	2	20-φ35	1-1/4-8UN-2B	24	943	366	/	223	216
20"	500	350	350	159	159	775	685.8	584.2	64	2	20-φ35	1-1/4-8UN-2B	24	1011	473	/	284	275
24"	600	390	390	181	181	915	812.8	692.2	70.3	2	20-φ42	1-1/2-8UN-2B	24	1166	748	/	415	402
28"	700	430	430	229	229	1035	939.8	800	86.2	2	24-φ45	1-5/8-8UN-2B	28	1390	/	/	536	520
32"	800	470	470	241	241	1150	1054.1	914	98.9	2	24-φ52	1-7/8-8UN-2B	28	1580	/	/	800	776
36"	900	510	510	241	241	1270	1168.4	1022	105.2	2	28-φ54	2-8UN-2B	32	1720	/	/	1292	1253
40"	1000	550	550	300	300	1240	1155.7	1086	114.8	2	28-φ45	1-5/8-8UN-2B	32	1660	/	/	1932	1874
48"	1200	630	630	360	360	1465	1371.6	1302	133.8	2	28-φ52	1-7/8-8UN-2B	32	1850	/	/	2946	2858

Contributing to safer and smarter pipe network flow control